



elastics and ligatures



elastics and ligatures



Leone offers two qualities of elastics: elastics manufactured with the best quality of latex available and No-Latex elastics cut from latex free elastomers indicated for patients with allergic reactions to this substance.

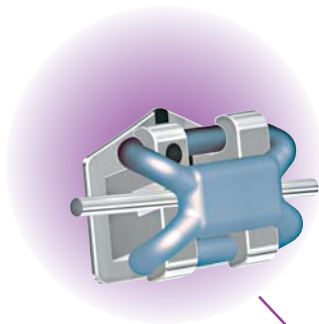
The innovative low friction **Slide™*** ligatures manufactured in a special medical grade polyurethane mix that allows to take full advantage of biomechanical properties of low friction systems thus reducing chair time and the need for extractions. These ligatures are especially indicated for use with **Logic Line™** brackets.

Leone modules for ligatures are stamped from elastomers offering the best elasticity and resistance to oral liquid absorption.

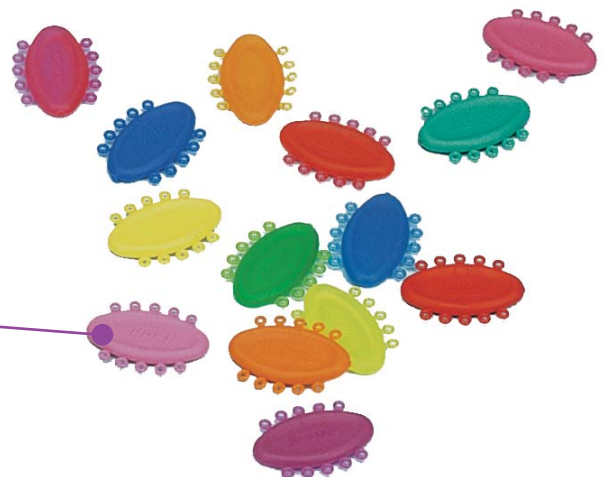
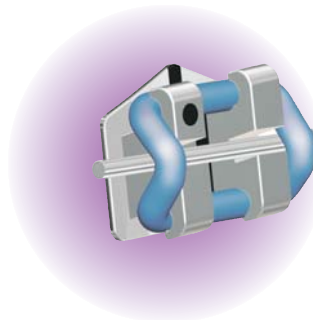
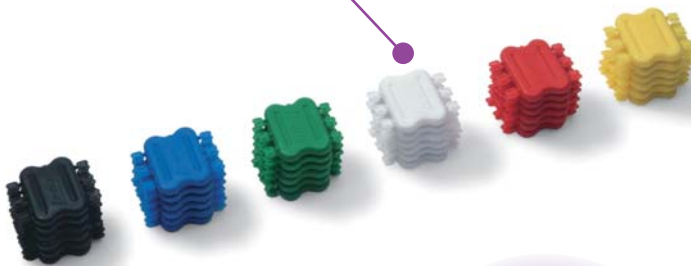
Leone wires for metal ligatures are manufactured out from a high vacuum annealed alloy for the best fit and higher mechanical load.



NO LATEX



Slide™



*patented



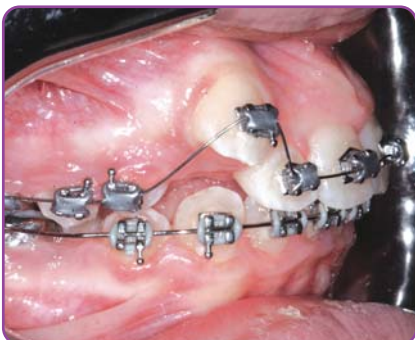
do you love **speed?**



Slide^{TM*}

low friction system

the simple efficiency
of low friction systems



Clinical result: after **27 days**
(courtesy of Dr. A. Fortini)

*patented

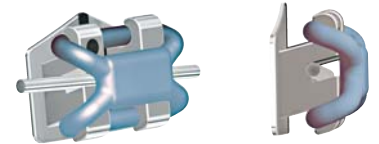
Slide™ low friction ligatures



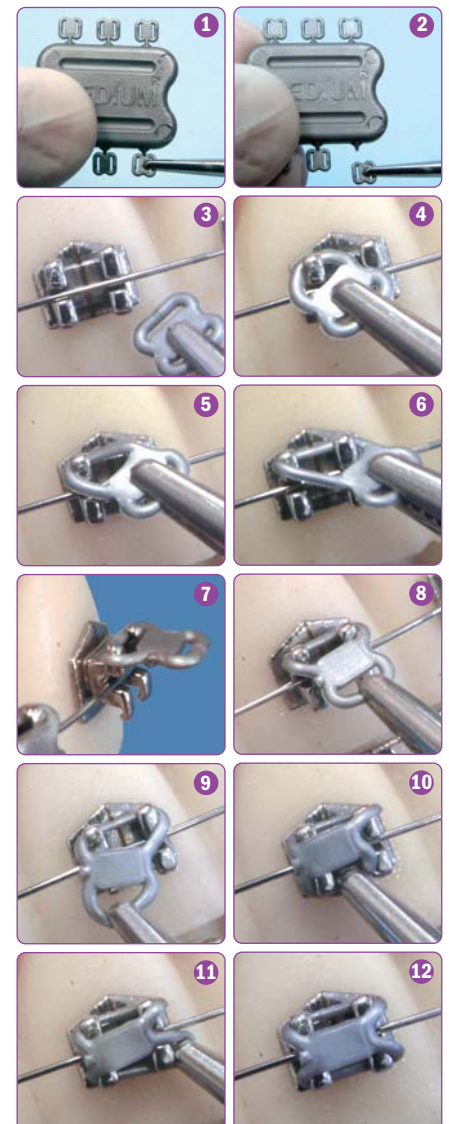
Slide™ low friction ligatures

Slide™ is a product manufactured with a special polyurethane mix for medical use. It is applied similarly to conventional elastomeric ligatures. Once placed on the bracket, it creates a passive ligature on the slot that makes the archwire free to slide and to produce its effects on the dentoalveolar structures. This ligature is especially indicated for use with **Logic Line™** brackets (pages 76..85), which are featuring an housing to keep **Slide™** ligature in place for integration in the bracket profile. The particular conformation of the **Slide™** ligature considerably improves patient's comfort during the first phases of treatment.

Packs of 10 modules of 6 ligatures each



colour	extra-small	small	medium	large	
	blue	K6254-10A	K6251-10A	K6252-10A	K6253-10A
	yellow	K6254-10G	K6251-10G	K6252-10G	K6253-10G
	green	K6254-10V	K6251-10V	K6252-10V	K6253-10V
	white	K6254-10	K6251-10	K6252-10	K6253-10
	red	K6254-10R	K6251-10R	K6252-10R	K6253-10R
	black	K6254-10N	K6251-10N	K6252-10N	K6253-10N
	ice	K6224-10	K6221-10	K6222-10	K6223-10
	silver	K6264-10	K6261-10	K6262-10	K6263-10



* patented

Slide™ low friction ligatures



Slide™ coloured ligature kit

- K6254-93** extra-small
- K6251-93** small
- K6252-93** medium

Packs of 432 pcs:
72 assorted modules, 6 ligatures each in 6 colors:
(black, red, white, green, yellow, blue)

K6220-95 Slide™ ligature ice kit

K6260-95 Slide™ ligature silver kit

Packs of 432 pcs: 72 modules, 6 ligatures each:
24 extra-small, 24 small, 24 medium



Courtesy of Dr. A. Fortini

Slide™ AQUA™ low friction ligatures

The new **Slide™ AQUA™** low friction ligatures, thanks to an innovative manufacturing process, are impermeable to oral liquids and stain resistant in the oral cavity (the most common problem with transparent elastomers). Frequent changes of ligatures are no longer necessary and perfect aesthetics is guaranteed. This ligature is especially indicated for use with **Logic Line™** brackets (pages 76..85), which are featuring an housing to keep **Slide™** ligature in place for integration in the bracket profile. Clear color.



- K6214-10** extra-small
- K6211-10** small
- K6212-10** medium

Packs of 10 modules, 6 ligatures each

K6210-93 Slide™ AQUA™ ligature kit

Packs of 432 pcs: 72 assorted modules, 6 ligatures each:
24 extra-small, 24 small, 24 medium

*patented

elastic ligatures



Elastic ligatures

Manufactured out from high elastic material with a precision injection moulding process.

The perfect ring section facilitates the ligation of the brackets.

The use of the mini modules allows for a better control of infections.

Elastic coloured ligature kit mini modules

K7351-93 inner diam. 1,0 mm - **small**

K7352-93 inner diam. 1,3 mm - **medium**

K7353-93 inner diam. 1,6 mm - **large**

Packs of 840 rings, 6 mini modules of 10 rings each in 14 colours

Mini modules

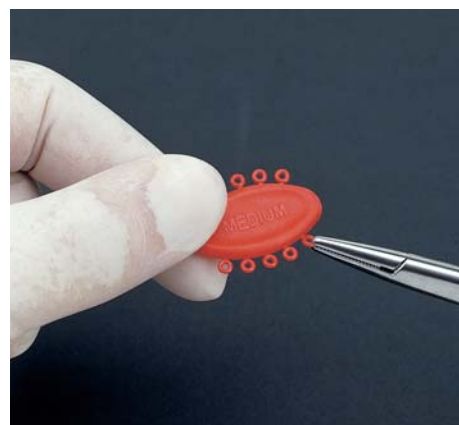
colour	inner diam. 1,0 mm small	inner diam. 1,3 mm medium	inner diam. 1,6 mm large	pkg.
blue	K7351-10A	K7352-13A	K7353-16A	200 pcs.
blue fluorescent	K7301-10A	K7302-13A	K7303-16A	
pink	K7351-10S	K7352-13S	K7353-16S	
pink fluorescent	K7301-10S	K7302-13S	K7303-16S	
green	K7351-10V	K7352-13V	K7353-16V	
green fluorescent	K7301-10V	K7302-13V	K7303-16V	
yellow	K7351-10G	K7352-13G	K7353-16G	
yellow fluorescent	K7301-10G	K7302-13G	K7303-16G	
red	K7351-10R	K7352-13R	K7353-16R	
red fluorescent	K7301-10R	K7302-13R	K7303-16R	
orange	K7351-10E	K7352-13E	K7353-16E	
orange fluorescent	K7301-10E	K7302-13E	K7303-16E	
purple	K7351-10L	K7352-13L	K7353-16L	
purple fluorescent	K7301-10L	K7302-13L	K7303-16L	
transparent	K7321-10	K7322-13	K7323-16	
silver	K7361-10	K7362-13	K7363-16	

Packs of 20 mini modules, 10 rings each

K7320-93

Elastic ligature kit silver and transparent mini modules

*Packs of 840 rings:
84 assorted mini modules of 10 rings each:
24 small, 36 medium, 24 large*



elastic chains and separators



Elastic chains for ligatures

For ligation of the archwire to brackets and application of traction force to close or maintain spaces in between two or groups of teeth.

inner diameter		grey	transparent	package
1,30 mm	long	K6460-13	K6420-13	spools of 5 m (15 feet)
	short	K6465-13	K6425-13	
	extra short	K6466-13	K6426-13	

Elastic chain kit

K6429-93 Transparent
K6469-93 Grey

Packs of 6 spools:
3 short, 2 closed and 1 long
on a plexiglas rack



long



short



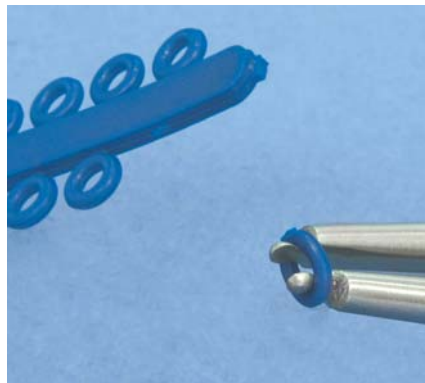
extra short



K6378-02 Radio opaque separators

The more practical and less traumatic separation system before banding. The radio-opaque rings show up clearly on X-rays. Use plier P1141-00 for placement.

Pack of 1000



K6378-00 Radio opaque separators in modules

Their circular section allows an easy application with the special plier P1141-00 assuring a gradual and comfortable separation of the teeth before the application of the bands. Radio opaque for a secure X-ray visualization.

Pack of 100 modules,
10 rings each



K6461-00 Tie-back

For the application of elastic tractions on treatments with **STEP** technique. Easy insertion on molar tube. The four anterior holes allow a perfect dosage of force on archwire hook. Colour: silver grey.

Pack of 10



elastic ligatures and ligature wire



Elastic ligating modules

inner diam.mm	transparent	grey	pink	blue	green	pkg.
1,0	K7825-10	K7865-10	K7855-10S	K7855-10A	K7855-10V	600
1,3	K7825-13	K7865-13	K7855-13S	K7855-13A	K7855-13V	pcs.

Packs of 30 modules, 20 rings each



Elastic ligatures

They may be used in replacement of metallic ligatures. Easy engagement under bracket tie wings.

inner diam.mm	colour		pkg.
1,0	transparent	K6320-10	1000 pcs.
1,3		K6320-13	
1,0	grey	K6360-10	
1,3		K6360-13	



Elastic tube for ligatures

Easy and high-tension ligatures are obtained.

∅ mm	colour		pkg.
0,6	transparent	K6120-06	8 m
0,8		K6120-08	



Cotton thread for elastic ligatures

A special elasticized cotton thread created for separation, distalization, traction movements of non-erupted teeth, rotation and closure of spaces at the end of treatment.

light	K4030-01	reels of 25 m
medium	K4030-02	
strong	K4030-03	

ligature wire and protective tubes



Ligature wire

Made of stainless steel.

mm	inch	package	package
0,23	.009	K4050-23	K4051-23
0,25	.010	K4050-25	K4051-25
0,28	.011	K4050-28	K4051-28
0,30	.012	K4050-30	K4051-30
0,36	.014	K4050-36	K4051-36

spools of 20 g approx. reels of 500 g approx.

Elastic ligature wire

500% elongation capacity with little fatigue. High degree of resistance to oral liquid absorption.

Spools of 8 m

mm	transparent	grey
0,60	K6020-06	K6060-06
0,80	K6020-08	K6060-08



K6990-18 Thermoretractile protective tube

A thermo retractile plastic tubing for covering of labial arches and lip bumpers. It acts as a bumper to protect the buccal mucous membrane from contact with metal wire for better patient comfort. For wires 1,5 mm (.045") up to 1,80 mm (.071") in diameter.

Pack of 1 m



K0470-00 Labial archwire tube

Made of a chemically inert material, anti-adhesive, non porous, with a very low friction coefficient. Slightly thermo retractile when heated at 150°C. For wires 0,7 mm (.028") up to 0,8 mm (.031") in diameter.

Pack of 5 m



Protective elastomeric tubing

High flexible tubing that can be easily slipped over the arch wire to protect buccal mucosa from damage or irritation. When cut to proper length, it prevents over-closure of spaces.

inner diam. mm	inch	colour	pkg.
0,5	.018	transparent	K6940-05
0,7	.027		K6940-07

3 m

preformed ligature wire and ligatures



Preformed wire Kobayashi

Once ligature is ready, a traction hook may be formed with the looped soldered end, suitable for any kind of bracket.

mm	inch		pkg.
0,30	.012	K4610-30	100
0,36	.014	K4610-36	



K4680-36 NATURA® preformed Kobayashi ligatures

Made of wire .014" (0,36 mm) in diameter, twisted, with tooth colour coating.

Pack of 100



K4280-30 NATURA® preformed ligature wire

Made of wire .012" (0,30 mm) with tooth colour coating.

Pack of 100



K4430-25 Preformed ligature ties

Made of wire .010" (0,25 mm) in diameter.

Pack of 1000



K4480-30 NATURA® preformed ligature ties

Made of wire .012" (0,30 mm) in diameter, with tooth colour coating.

Pack of 100



Preformed ligature wire

mm	inch		pkg.
0,23	.009	K4210-23	1000
0,25	.010	K4210-25	
0,28	.011	K4210-28	
0,30	.012	K4210-30	

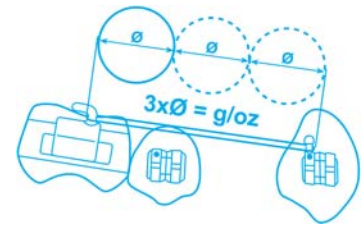


Intraoral elastics

Cut from pure surgical latex tubing. All packages indicate the diameter size and the elastic pull which comes into force when the elastic is stretched three times its diameter. On each bag a colored image is printed, for an immediate identification from young patients.

Packs of 10 bags, 100 elastics approx. each bag

		1/8"-3,2 mm	3/16"-4,8 mm	1/4"-6,4 mm	5/16"-7,9 mm	3/8"-9,5 mm
inner diameter						
		brown	green	red	blue	orange
light 2,5 oz-70 g		K0901-02	K0902-02	K0903-02	K0904-02	K0905-02
medium 4,5 oz-126 g		K0906-04	K0907-04	K0908-04	K0909-04	K0910-04
heavy 6,5 oz-182 g		K0915-06	K0911-06	K0912-06	K0913-06	K0914-06



Extraoral elastics

Cut from pure surgical latex.

Packs of 1 bag with 100 elastics approx.

K0930-93 Extraoral elastic kit

Pack of 10 bags, 1 each diameter and pull force, 100 elastics

	3/16"-4,8 mm	1/4"-6,4 mm	5/16"-7,9 mm	3/8"-9,5 mm	1/2"-12,7 mm
inner diameter					
strong 8 oz-224 g	K0932-08	K0933-08	K0934-08	K0935-08	K0936-08
extra strong 14 oz-392 g	K0942-14	K0943-14	K0944-14	K0945-14	K0946-14

Caution: these products contain natural rubber latex that may cause allergic reactions.

K0950-00

Applicator for intraoral elastics

Pack of 100

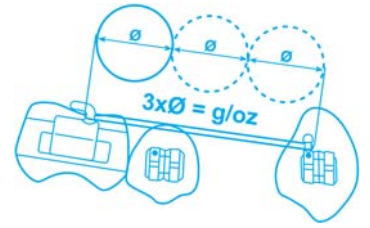




No-Latex intraoral elastics





Manufactured with latex free elastomer material, they are suggested for patients with allergic reactions to latex. No-Latex elastics behave exactly like conventional ones in the mouth. On the dispenser the diameter and the ounce pull which comes into force when the elastic is stretched three times its diameter are indicated.

The dispenser, easy to open and to close, has been designed to guarantee hygienic conditions and to make the patient to appraise quality and safety of the product.



Boxes of 10 dispensers, single type, of 100 pcs each



	3/16"-4,8 mm	1/4"-6,4 mm	5/16"-7,9 mm	3/8"-9,5 mm
inner diameter	 green	 red	 blue	 orange
light 2,5 oz-70 g	K1902-92	K1903-92	K1904-92	K1905-92
medium 4,5 oz-126 g	K1907-94	K1908-94	K1909-94	K1910-94
heavy 6,5 oz-182 g	K1911-96	K1912-96	K1913-96	K1914-96



No-Latex intraoral elastic kit

- K1900-02** 70 g - 2,5 oz
- K1900-04** 126 g - 4,5 oz
- K1900-06** 182 g - 6,5 oz

Assorted packages composed of 4 boxes, one each diameter available, each box containing 10 dispensers of 100 elastics approx.